

Daily COVID-19 Situation Report

Highlights

- The first three COVID-19 cases to be registered in Malawi have been confirmed to have recovered.
- There were no new confirmed cases of COVID-19, three recoveries and no deaths recorded in the past 24 hours.
- The total confirmed COVID-19 cases to date are 17 with 2 deaths and 3 recoveries.
- There are currently 12 active cases
- Zomba has one case which was misclassified as from Blantyre
- 303 contacts have been traced to date
- 97 contacts tested
- 7058 high-risk travellers have entered the country through formal borders to date
- 214 people bringing in essential goods and services have entered the country in the past 24 hours

Background

On 31 December 2019, the World Health Organization (WHO) was alerted of several cases of pneumonia of unknown cause detected in Wuhan City, Hubei Province of China. Later the disease was named Coronavirus disease-19 (COVID-19) and the virus was named Sars-Cov2. World Health Organization declared the COVID-19 outbreak a pandemic on 12th March 2020.

On 20 March 2020, COVID-19 was declared a national disaster in Malawi and on 2 April 2020 we registered our first cases of COVID-19. His Excellency the President of the Republic of Malawi, Prof. Arthur Peter Mutharika gave a press briefing to inform the nation.

Global situation¹

As of 18 April 2020, no new country/territory/area reported cases of COVID-19 in the past 24 hours. WHO reported 2 160 207 (85 678 new) confirmed COVID-19 cases, 146 088 (6710 new) deaths, a case fatality rate of 6.76%.

Table1: Number of cases and death of COVID-19 in countries that share a boundary with Malawi

Country	Cumulative cases	New cases	Cumulative deaths	New deaths	Days since last reported case
Mozambique	31	2	0	0	0
Zambia	52	4	2	0	0
Tanzania	148	54	5	1	0

¹ Data extracted from WHO COVID-19 situation reports <https://www.who.int/emergencies/diseases/novel-coronavirus-2019/situation-reports>

Local situation

Malawi has reported no new case in the past 24 hours. The first three cases have now been confirmed to have recovered.

Malawi has so far registered 17 cases (7 from Blantyre, 6 from Lilongwe, 1 from Zomba, 1 from Chikwawa and 1 from Nkhotakota) as well as 2 deaths (1 from Blantyre and 1 from Lilongwe). With the three cases that have recovered, the total number of active cases is 12.

To date, a total of 7058 high-risk travellers have entered the country and are being monitored out of which 1774 have been discharged after completing the 14-day mandatory self-quarantine. Currently, only three borders are still open to allow transit of essential services, in the past 24 hours 214 essential services personnel entered Malawi. Active tracing and monitoring of contacts of confirmed COVID-19 is ongoing, currently, a total of 303 contacts of COVID-19 cases have been traced out of which 97 have been tested. Table 1 below provides a summary of surveillance activities.

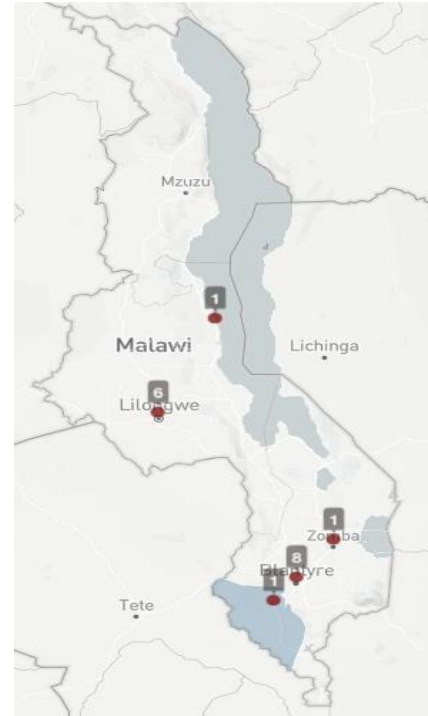


Table 1: Summary statistics for COVID-19 outbreak in Malawi as of 18 April 2020

	Statistic
Essential services personnel entries in last 24 hours in PoEs	214
Travellers intercepted and repatriated in the past 24 hours	19**
Cumulative high-risk traveller entries at Points of entry	7058
High-risk travellers on follow up at district level *	1998
Cumulative travellers completed 14 days follow up at district level	1774
Suspected cases	449
Probable cases	1
Cumulative confirmed cases	17
Cumulative deaths	2
Number of active cases	12
Cumulative recoveries	3
Cumulative contacts listed	303
Contacts on follow up	303
Contacts tested to date	97
Contacts that completed 14 days followed	0
Specimen received by the lab in the past 24 hours	16
Cumulative specimen received by the lab	449
Cumulative specimen tested	429
Number of cases with a positive result in the past 24 hours	0

* The number of high-risk travellers on follow up as district level is under-reported (few districts reported)

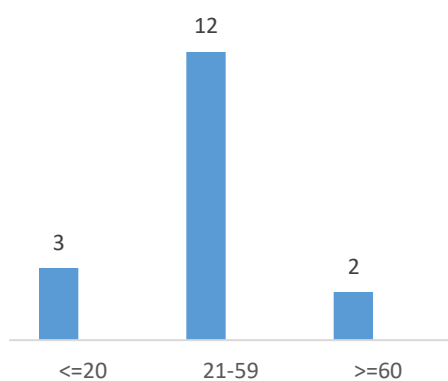
**Refugees returned to Dzaleka

Table 2: Summary of COVID-19 cases reported countrywide as of 18 April 2020

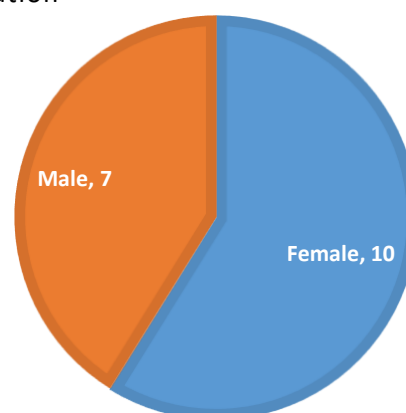
Reporting District	New Cases	Confirmed Cases	New Deaths	Total Deaths	Transmission Classification	Days since last reported case
Lilongwe	0	6	0	1	2 Imported 4 Local transmission	7
Blantyre	0	9	0	1	3 Imported 6 Local transmission	2
Chikwawa	0	1	0	0	1 Imported	9
Nkhotakota	0	1	0	0	1 Imported	7

Sex and age distribution of COVID-19 cases

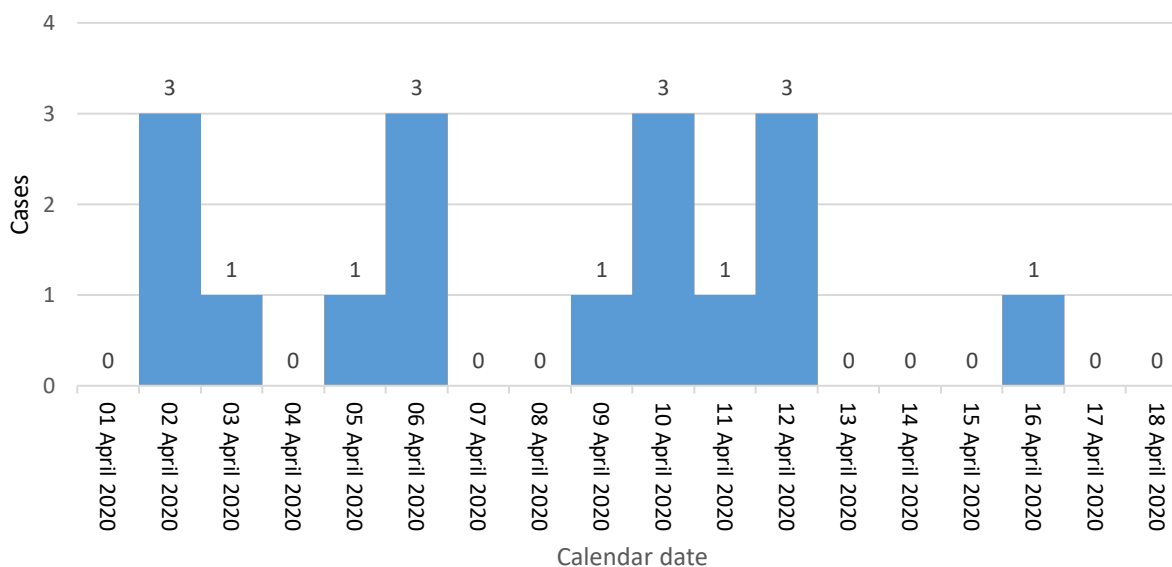
Number of COVID-19 active cases and deaths by age, 18 April 2020



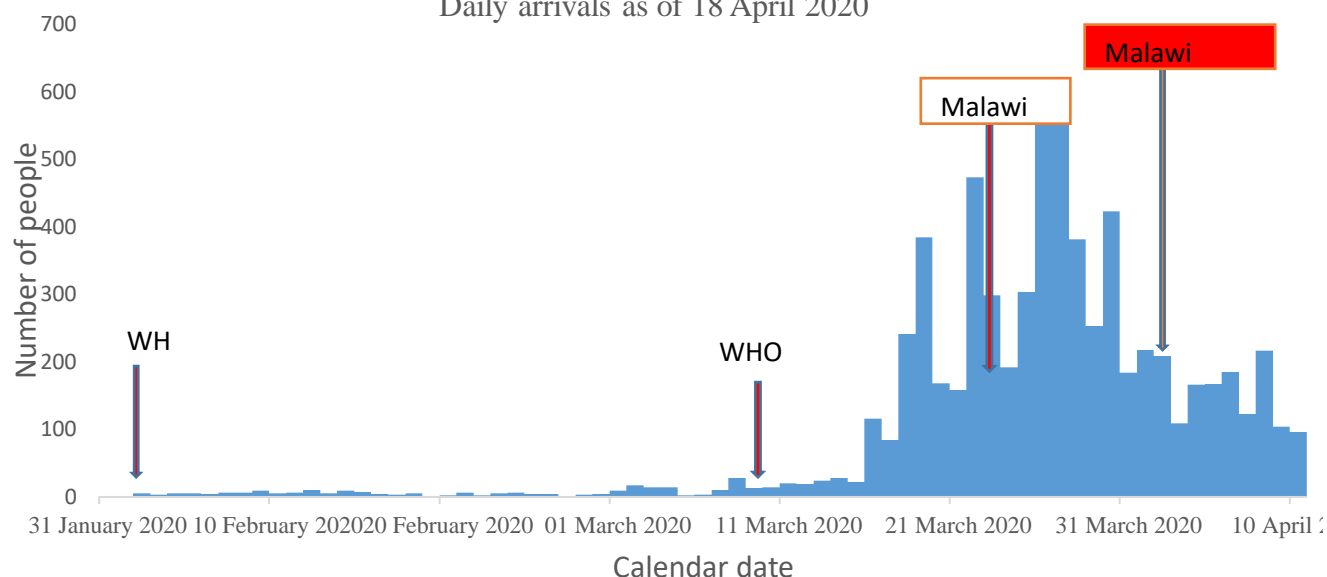
COVID-19 confirmed case sex distribution



Confirmed COVID-19 Cases distribution by date of confirmation as of 18 April 2020



Daily arrivals as of 18 April 2020



*The number of travellers have gone down since the close of our borders and restriction of travel to essential goods and services.

Laboratory testing

Currently, four laboratories are testing COVID-19 in the country, National Health Reference (NHRL) in Lilongwe, College of Medicine (COM) laboratory and Malawi Liverpool Wellcome Trust (MLW) in Blantyre, and Mzuzu Central Hospital laboratory in Mzuzu. As of 18 April 2020, a total of 429 samples have been tested, with 17 positive results and 8 pending results. Table 2 shows the breakdown of tests done by each laboratory.

Table 3: Laboratory testing for COVID-19 for Malawi, 18 April 2020.

Name of Laboratory	Cumulative samples	In the past 24hrs		Total tested	Pending results	Result	
		Samples received	Samples tested			Positive	Negative
NHRL	182	0	3	178	0	7	171
COM	166	5	5	152	6	10	142
MLW	97	0	0	95	2	0	95
Mzuzu	4	0	0	4	0	0	4
Total	449	5	8	429	8	17	412

Clinical case management

- 3 cases have now recovered
- 10 active cases are being managed as outpatient cases under self-isolation
- 2 asymptomatic cases have been institutionalized due to security reasons
- Cumulatively, we have 2 death
- Current clinical case management training is underway in all districts
- 20 ventilators deployed to the central hospitals for tertiary care of COVID-19 critical cases

Enforcement and security

- MDF and Police ready to enforce lockdown measures
- Police deployed to provide border security patrols
- Road traffic police enforcing new seating capacity for public transportation
- Control of crowds in public and private service outlets (e.g. banks)
- Joint patrols on Lake Malawi (MDF and Immigration)
- Roadblocks mounted in strategic points across the country

Point of entry

- Monitoring essential service personnel travel
- All borders closed except 3 for essential personnel travel (e.g. petroleum services and other goods).

Logistics

- Deliveries to districts of supplies from UNICEF is done
- Deliveries to districts of supplies from Chinese donation in progress – besides the districts, this also accommodates Army, Prison and Police

Risk communication and community engagement

- Continued airing of COVID-19 public service announcements on community and national radio stations.
- Daily updates through **ZODIAK radio**
- Set up interactive COVID-19 messages on **Airtel *919#**
- Production and printing of fact sheets, posters, leaflets, and roll-up banners.
- Push messages on Airtel and TNM in both English and Chichewa.
- Community awareness meetings.
- Develop messaging for public service announcements to suit the current measures on lockdown.
- Mobile van units for the distribution of information, education and communication materials in Lilongwe, Blantyre, and Mangochi

Coordination

In order to facilitate coordination and maintain focused efforts towards combating COVID-19 we hold routine and ad-hoc meetings:

- Established a special cabinet committee on COVID-9 and they meet regularly
- Weekly health cluster meetings
- Weekly meetings of technical committees for the various response pillars
- Daily surveillance technical committee meetings
- Daily emergency operation center meetings
- Implementation of national response plan

Case definitions

1. Suspect Case

- A patient with acute respiratory illness (fever and at least one sign/symptom of respiratory disease, e.g. cough, shortness of breath), AND a history of travel to or residence in a location reporting community transmission of COVID-19 disease during the 14 days prior to symptom onset.
- A patient with any acute respiratory illness AND having been in contact with a confirmed or probable COVID-19 case in the last 14 days prior to symptom onset;

OR

- A patient with severe acute respiratory illness (fever and at least one sign/symptom of respiratory disease, e.g. cough, shortness of breath; AND requiring hospitalization) AND in the absence of an alternative diagnosis that fully explains the clinical presentation

2. Probable Case

- A suspect case for whom testing for COVID-19 is inconclusive. Inconclusive being the result of the test reported by the laboratory

OR

- A suspect case for whom testing could not be performed for any reason.

3. Confirmed Case

- A person with laboratory confirmation of COVID-19 infection, irrespective of clinical signs and symptoms.

Classification of transmission patterns

No cases: Countries/territories/areas with no confirmed cases

Sporadic cases: Countries/territories/areas with one or more cases, imported or locally detected

Clusters of cases: Countries/territories/areas experiencing cases, clustered in time, geographic location and/or by common exposures

Community transmission: Countries/area/territories experiencing larger outbreaks of local transmission defined through an assessment of factors including, but not limited to:

- Large numbers of cases not linkable to transmission chains
- Large numbers of cases from sentinel lab surveillance
- Multiple unrelated clusters in several areas of the country/territory/area



Conclusion

The Ministry of Health and partners continue in its efforts to ensure the citizens are protected from the Coronavirus outbreak and that the country is able to detect and respond to any cases that may arise.

- Daily update dashboards can be accessed from <http://covid19.health.gov.mw/>
- Toll-free call line with Chipatala Cha Pa Foni (number: **54747**).

Prepared by: Epidemiology Unit, Public Health Institute of Malawi (PHIM), available on <http://malawipublichealth.org/>